

# Toyota/Lexus Smart System ID Code box reset

## I. Getting Started

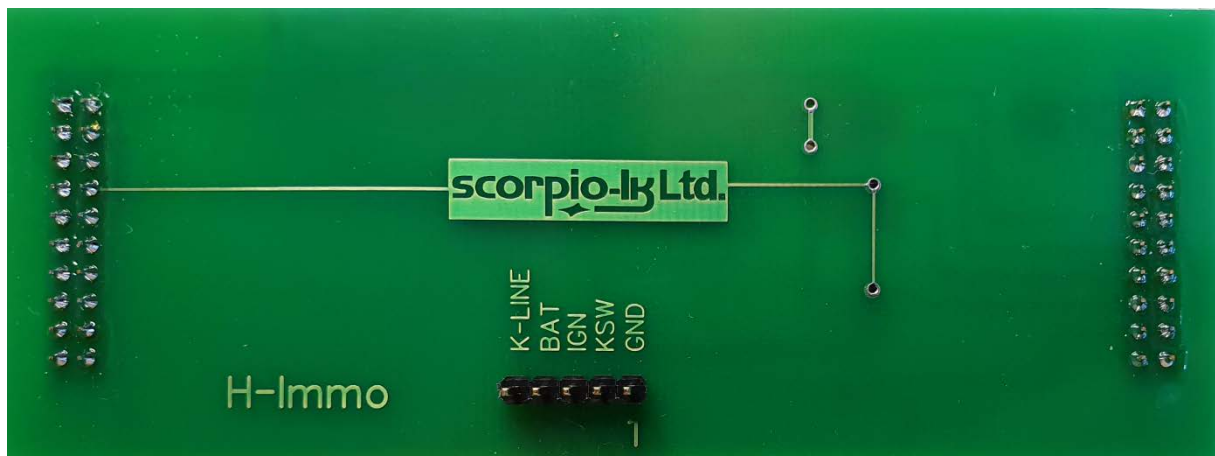
### Introduction

The following documentation relates to Barracuda software version 36 (September 2024). The system allows to **reset** ID Code box of Toyota/Lexus smart system vehicles 2013-2021+ (including the latest smart systems which don't use ESL and are based on HITAG & DST AES keys with Page1:BA. Reset of **both** ESL and ID code box allows resynchronization via standard Toyota diagnostic procedures (Techstream) and thus solve all keys lost situation for these vehicles by replacing the Certification ECU (Smart box) with a new one that has at least one paired key. Alternatively a second hand Certification ECU that matches the type / part number and is pre 2017 (not locked) can be used in conjunction with [Tango+ for Toyota/Lexus Smart Key Systems OBD Framework](#) to create an emulator on the bench and synchronize it with the reset ID code and ESL.

#### System requirements:

- [Barracuda programmer](#)
- [Barracuda Adapter H-Immo](#)
- [Barracuda activation ID Code & ESL reset activation](#)

### Barracuda Adapter H-Immo



## II. Operation Procedure

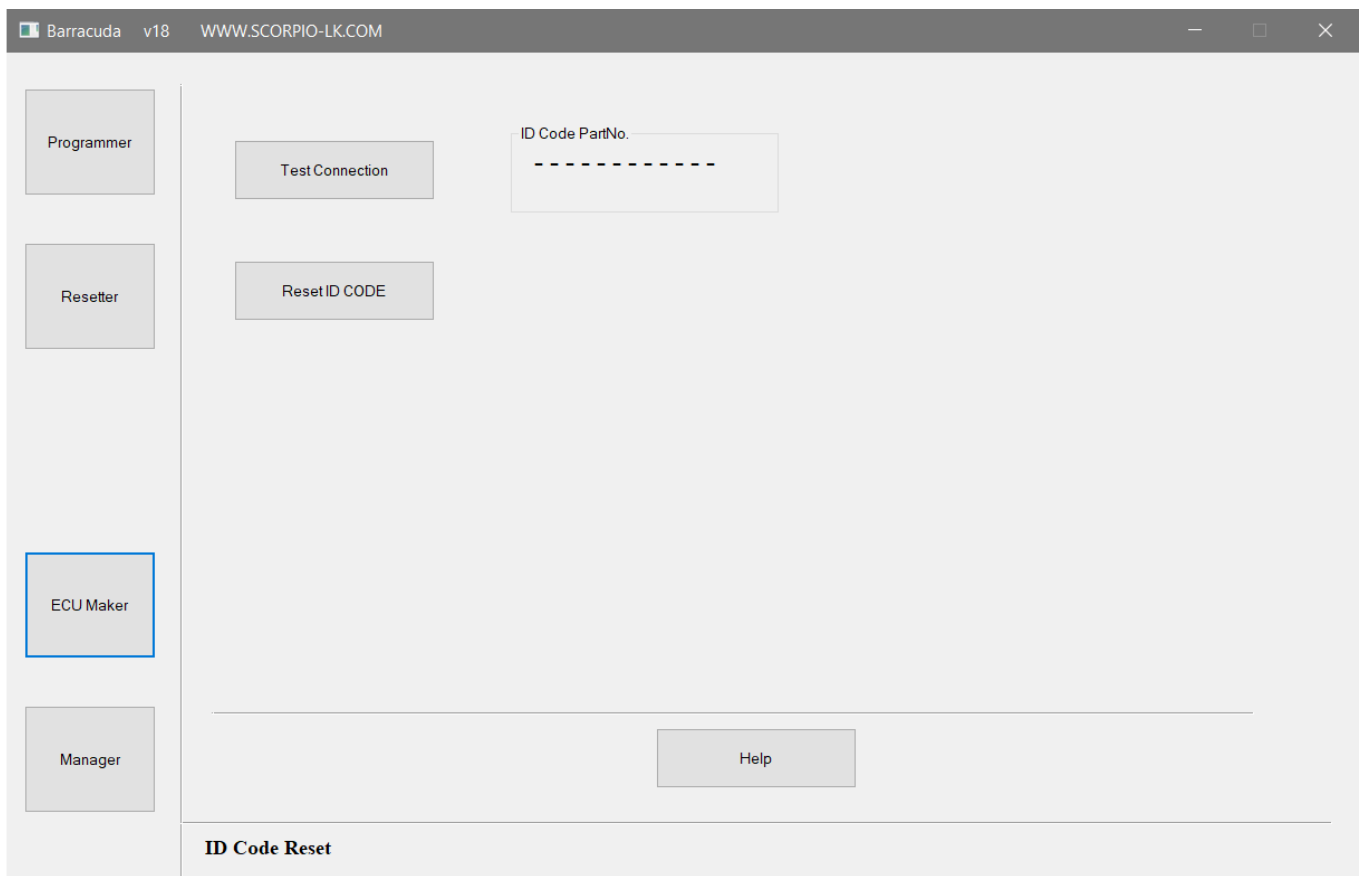
### Connection Diagram

1. **Disconnect** vehicle's Certification ECU (Smart box)

2. Connect Barracuda H-Immo adapter to vehicle's LIN line by accessing it through the ESL's (Electric Steering Lock) connector. Locate and unplug it then connect as shown on the diagram



3. Start Barracuda software and select ECU Maker->Toyota->ID Code Reset



4. Press **Test Connection** to verify wiring then proceed with **Reset ID CODE**

## Connection Diagram for workbench

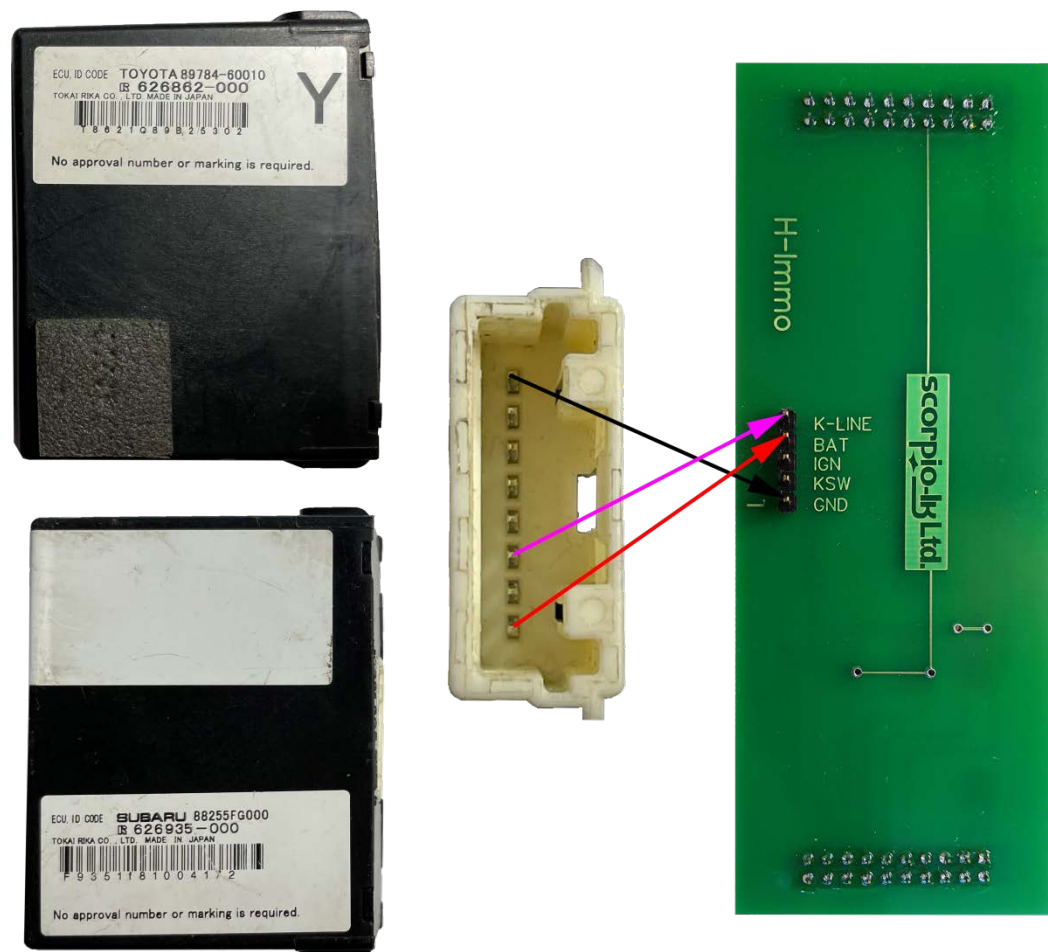


## III. Toyota & Subaru 40 & 80bit ID Code box

### Connection Diagram for workbench

Connection on board  
vehicle is **same** as the  
shown in part II.

**Operation Procedure.**



## IV. Addendum

### Barracuda Power Supply

In order to operate Barracuda requires 9-24V DC supplied to its 5.5x2.1mm center positive plug. When working mobile this can be easily achieved by using a Step-UP (5 to 9/12/24V DC) connected to a power bank, laptop USB port or getting 12V DC from a vehicle's lighter or other power supply port.



## V. Changelog

- Software version 36 September 4<sup>th</sup> 2024 – Added ID ID Code for vehicles 2021+ without ESL, using keys HITAG AES & DST AES Page1:BA configuration
- Software version 35 December 6<sup>th</sup> 2023 – Added ID Code for smart systems based on both HITAG AES & DST AES Page1:BA keys
- Software version 25 November 6<sup>th</sup> 2022 – Added new variants 128bit ID code