

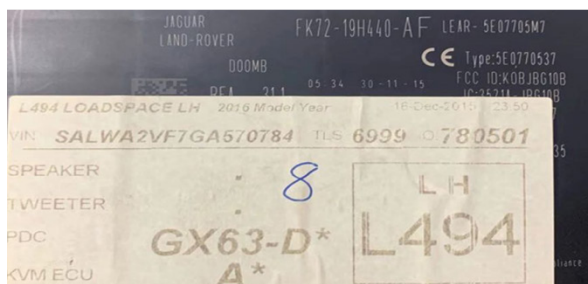
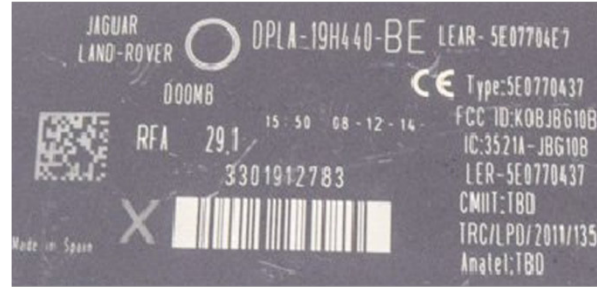
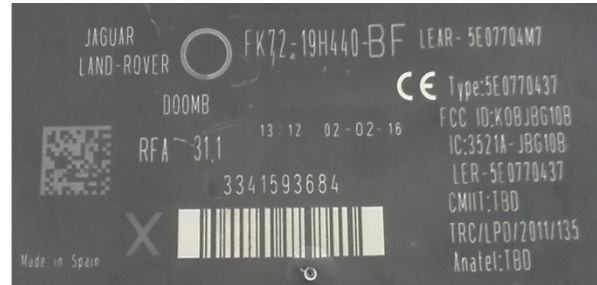
Range Rover (L320) Hitag Pro (KeyLessGo) 2010 - ...

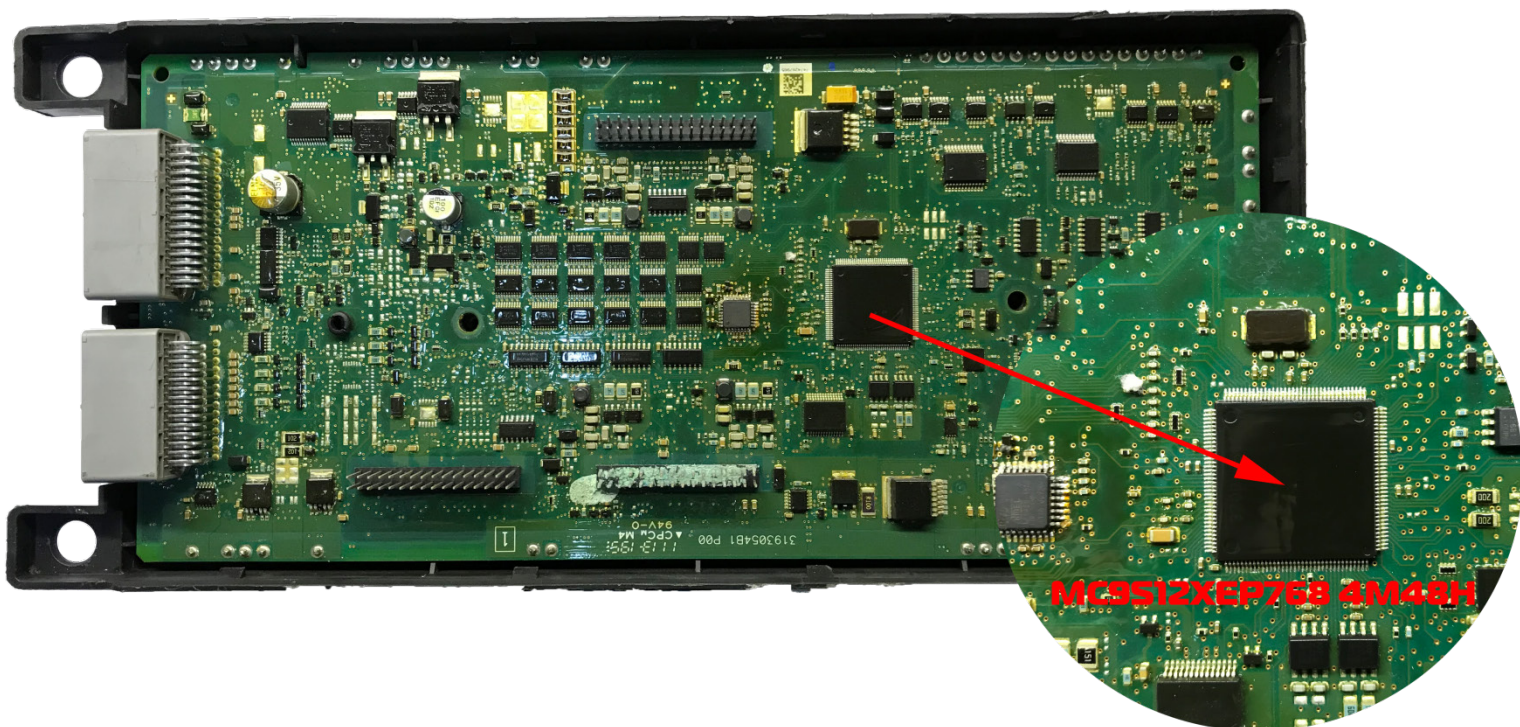
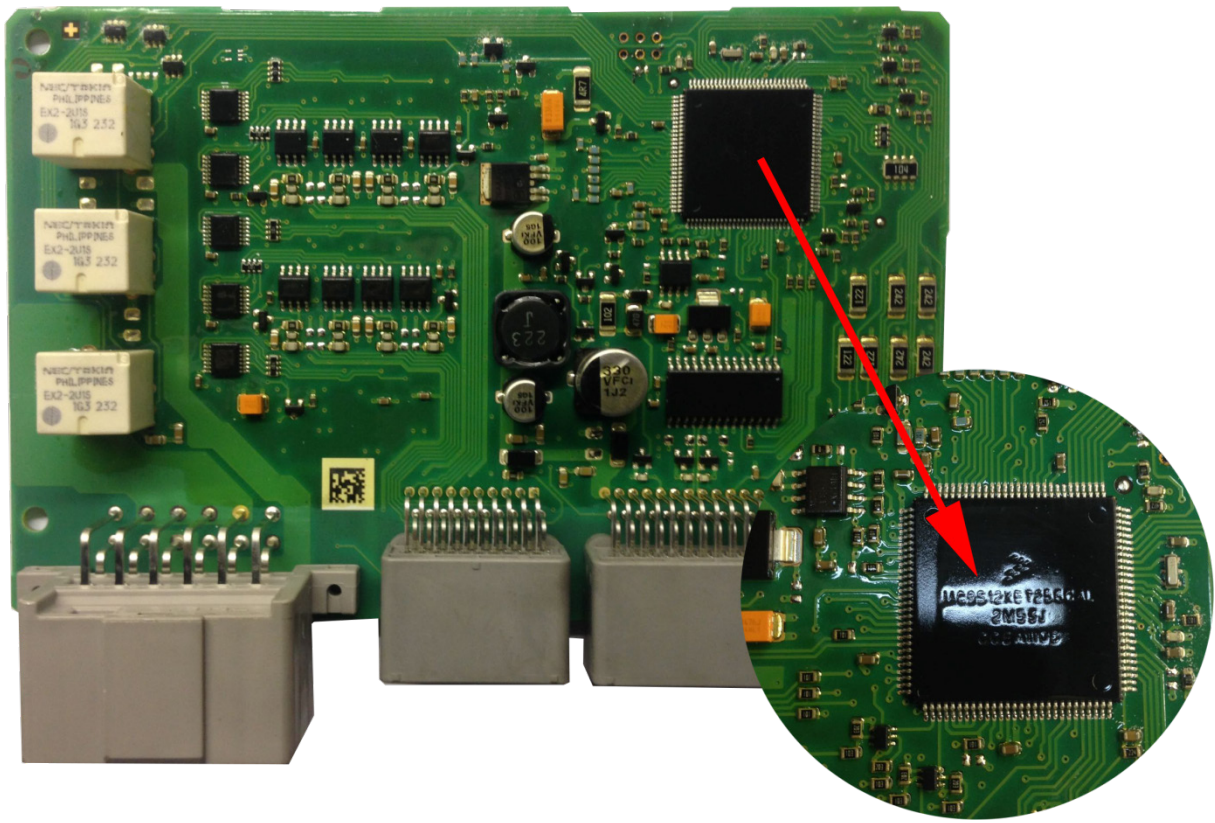
I. Overview

Range Rover
Discovery 4
Evoque
Sport

Jaguar
XE
XF
XJ

Original transponder	HITAG PRO
Allowed transponder	HITAG PRO : PCF7939P [BCM]; PCF7953 KeylessGo [RFA+BCM]
Data location	RFA [MC9S12XEP256: D-Flash+EEE] & BCM [MC9S12XEP768: D-Flash]
No. of keys	8



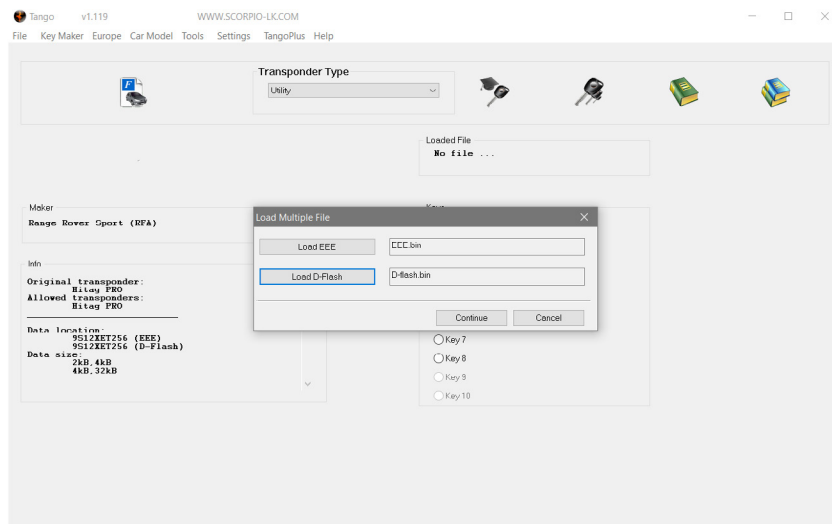


II. Keyless (RFA+BCM)

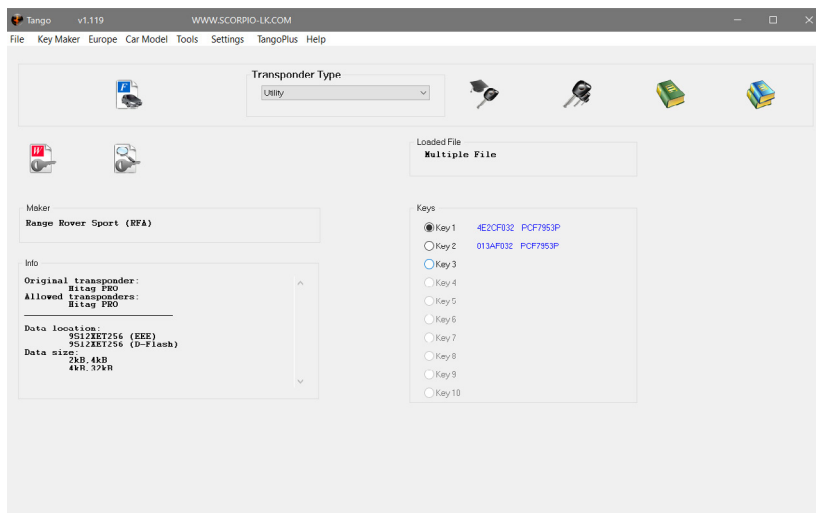
The following procedure allows programming a fully functional HITAG Pro KeylessGo key (PCF7947, PCF7953), it has to be added in **both** RFA and BCM, resulting key will have both KeylessGo and Emergency start functions.

Procedure

1. Open the RFA maker and Load RFA dump files [MC9S12XEP256: **D-Flash+EEE**]

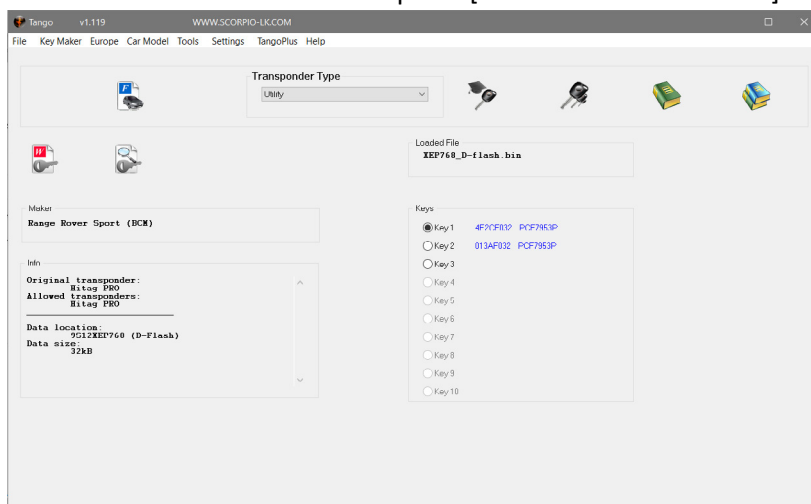


2. Select key position



3. Write key, after completion new EEE file is generated

4. Open the BCM maker and load BCM dump file [MC9S12XEP768: **D-Flash**]



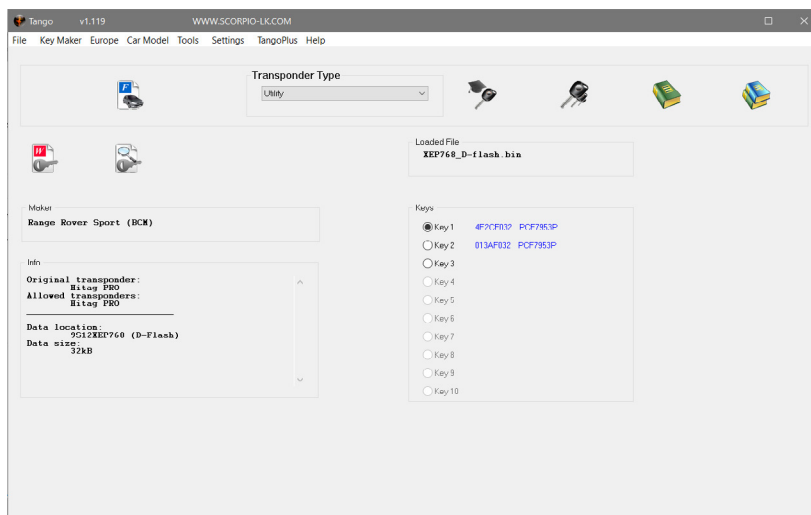
5. Select same position as in the RFA maker
6. Write key, after completion new D-Flash for the BCM is generated

III. Emergency start (BCM)

The following procedure allows programming an emergency start key on HITAG PRO transponder PCF7939P, adding it only in the BCM is enough.

Procedure

1. Open the BCM maker and load BCM dump file [MC9S12XEP768: **D-Flash**]
2. Select same position
3. Write key, after completion new D-Flash for the BCM is generated



IV. FAQ and Remarks

Q: How to read MC9S12XEP256 & MC9S12XEP768?

A: The MCUs in both RFA and BCM are not secured and can be read with any general purpose programmer that supports them, following the connection requirements for the particular device.

Q: Are 2016+ RFA models supported?

A: No

Q: Can I program only RFA ?

A: Yes, in such case key's keyless go will be fully functional, but emergency start won't work.