

## Cloning of DST transponders

Currently, only Toyota and Yamaha keys are supported. For more details, Toyota supported keys have the 1-st page from the following set:

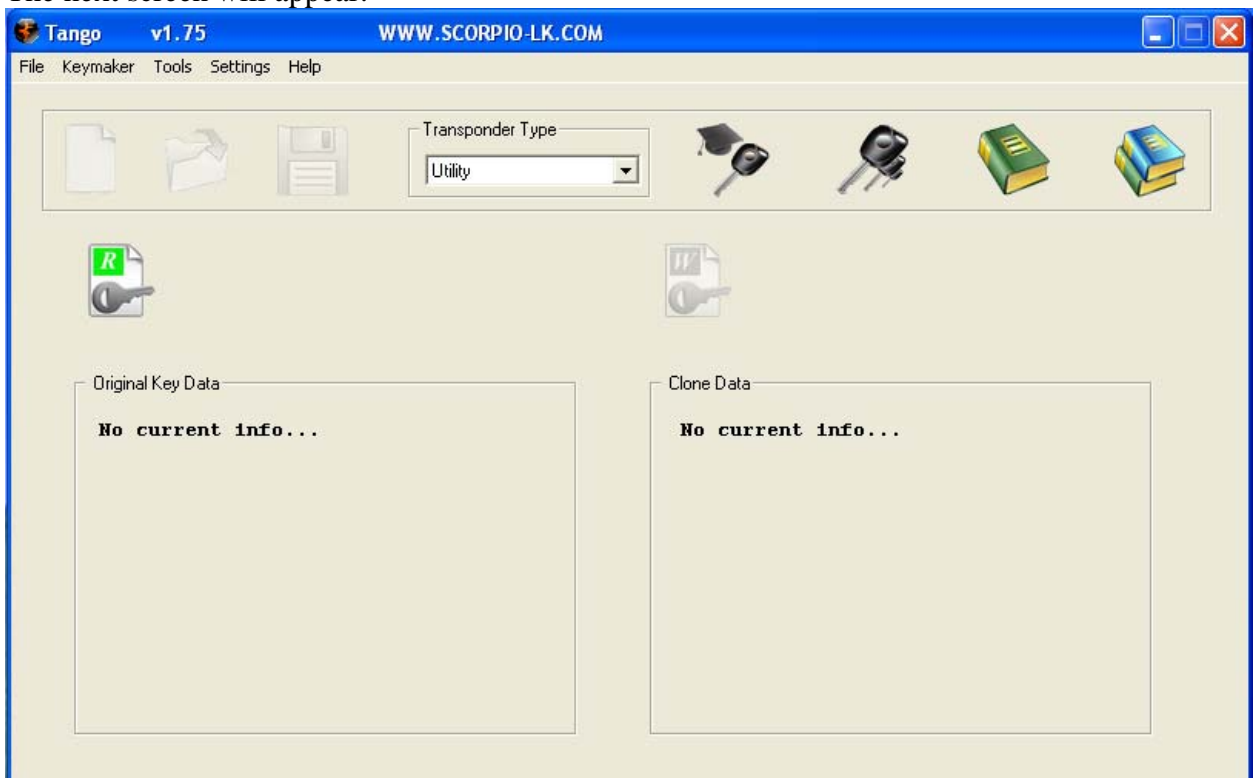
- X0
- X2
- X3
- X4\*

X4\* - only european market supported.

Run the **Clone Mode** selecting the appropriate menu item:



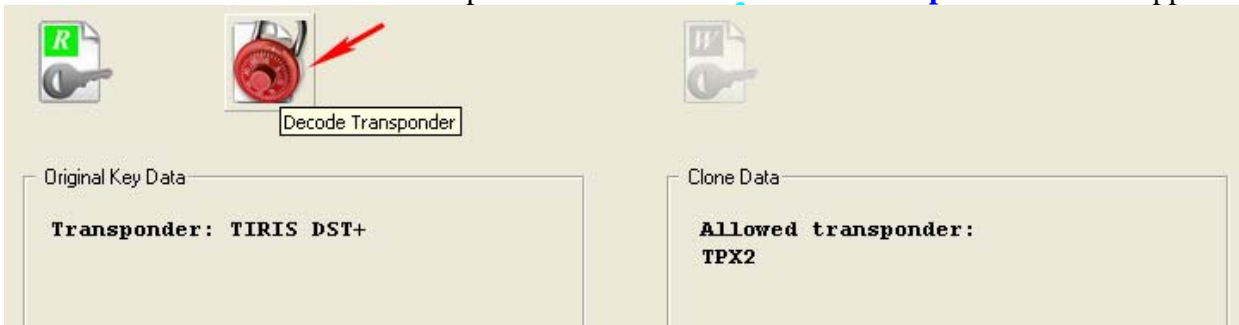
The next screen will appear:



Place an original key on the Tango and click “**Read original key**” button:



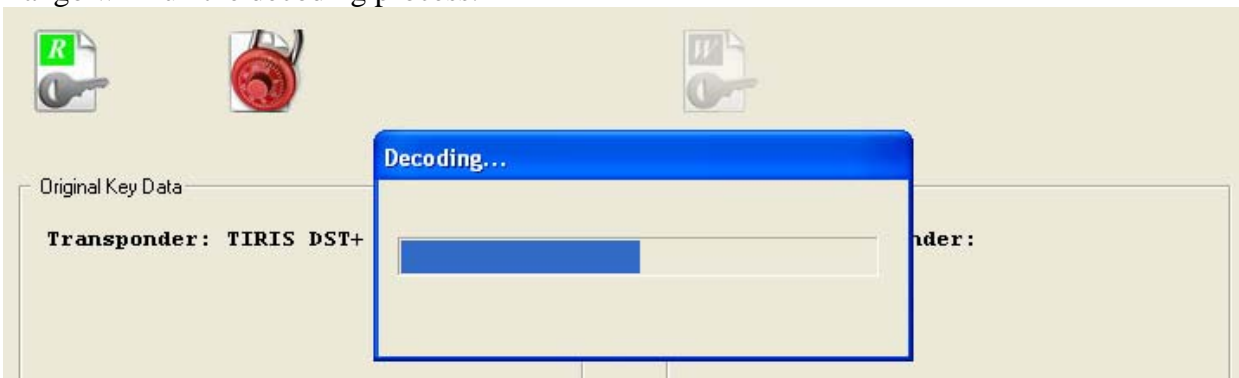
Once the TIRIS DST or DST+ transponder detected the **“Decode Transponder”** button appears:



Click the **“Decode Transponder”** button. The dialog window about your intention will appear. On this dialog, click **YES** button:



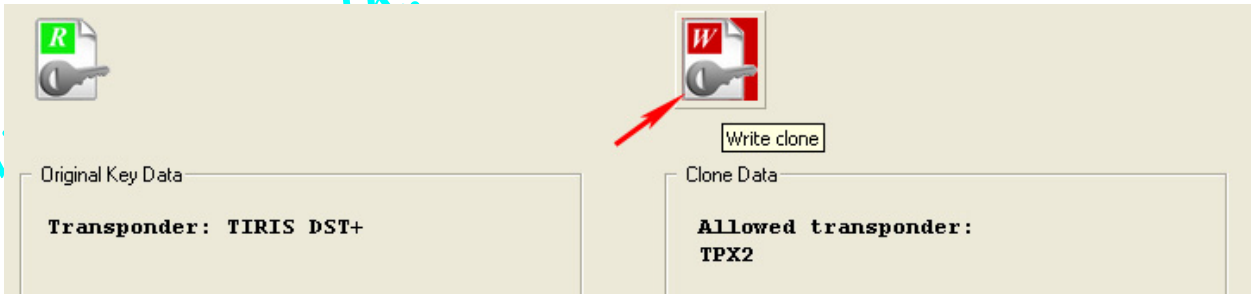
Tango will run the decoding process:



In case the decoding finishes successfully the **“Write Clone”** button will appears:

lk.com

www



Now, **remove the original key** and replace it with EH2 (battery emulator) or TPX2 transponder. You are all set to make a clone. Click the **“Write Clone”** button and Tango will do it.

www.scorpio-lk.com

www.scorpio-lk.com

www.scorpio-lk.com

www.scorpio-lk.com